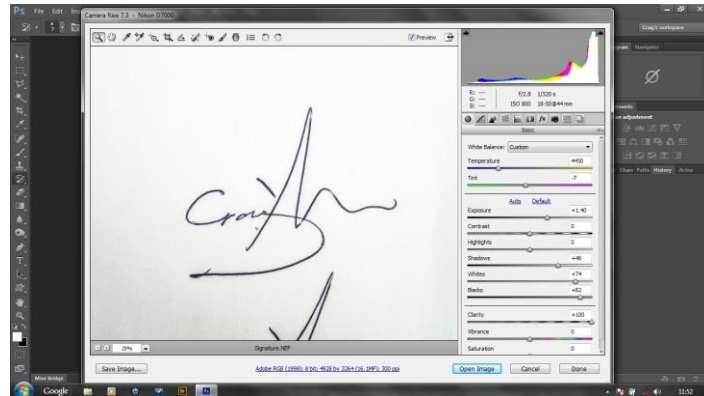


# Adding your Signature

To add your signature to a picture we want to make it into a brush.

Scan, or if you have a graphics tablet you can sign the tablet to digitise your signature. Otherwise, take a picture of your signature with a digital camera. Open the image in Photoshop. If you have taken the image in RAW then boost the shadows, whites, clarity, blacks and exposure to get the paper white and the signature black.



In Photoshop - crop the image and use the clone stamp to clean up the signature. Make a Levels adjustment and bring the black point in to the right, the white point slider to the left (to make the paper pure white) and move the midpoint slider to the right to make the signature more black.

Flatten the image. The maximum size of a brush is 2500px so open Image>Image size and check the image is less than 2500px wide or high. Resize if necessary.

Make a copy of the flattened layer. We want to remove the white from this so select the magic wand tool and make sure Contiguous is unticked in the top options bar. Click on any white part of the image. Shift+click any parts which were missed to add to the selection.

Optional: Click Refine Edge and add a small amount of Smoothness.

Now we want the signature and not the background selected so either:

- i) Select>Inverse (Cntl+Shift+I) and take this to a new layer (Cntl+J) or
- ii) Keep the white part as the selection and delete this by hitting Backspace or Delete.

Deselect the marching ants (Select>Deselect or Cntl+D). Turn off the bottom layer(s). Your signature should be on the checkerboard showing it is on transparent pixels.



Edit>Define Brush Preset and call it something imaginative like 'My Signature'.

Now, how do you add this to a finished image?

Create a new blank layer by clicking the little square with the upturned corner at the bottom of the layers palette.

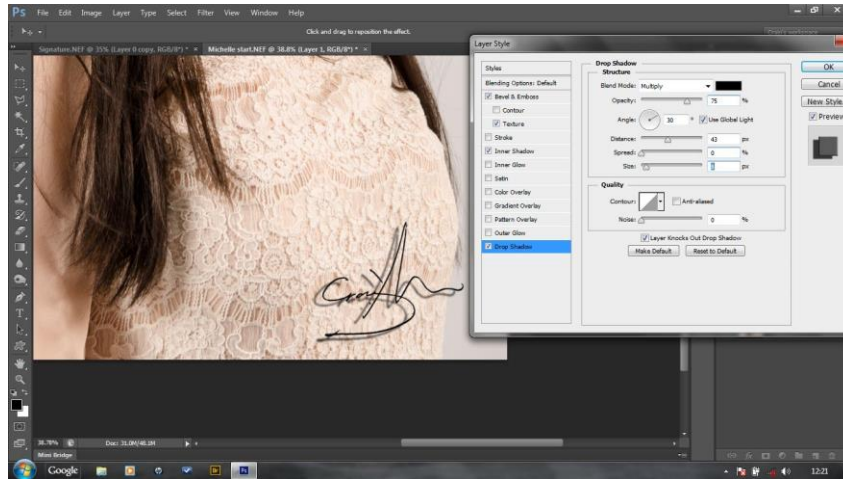
Choose an appropriate colour for your brush by clicking on the foreground colour square in the tools palette on the left hand side. e.g. white if your picture is dark.

Select the brush tool and on the options bar at the top click on the down arrow beside the brush size icon and the new signature brush will be the last of the brush options. Resize this using the square brackets.

Click once on your image. Now if you need to resize this or move it choose the Move tool and make sure the show bounding box is checked. Move the corner handles (while holding down the shift key to keep it in proportion), drag it or use the arrow keys to move it to a new position.

To make it look a bit more 3D I sometimes do a signature in black, flip the foreground colour to white then do a second signature in white slightly offset to look like a drop shadow.

You can add a Layer style to the signature by clicking on the Fx button at the bottom of the layers palette. Here I have chosen a drop shadow effect.



Tip: if the signature looks a bit faint then duplicate the signature layer by dragging onto the new layer icon at the bottom of the layers palette.

Save with the layers or flatten if you want a smaller file or want to reposition the signature later.

Done!

PS. This is my 'Signing for Deliveries' signature not my 'Give me some money' signature so don't attempt to forge it as you won't get any money – only parcels!