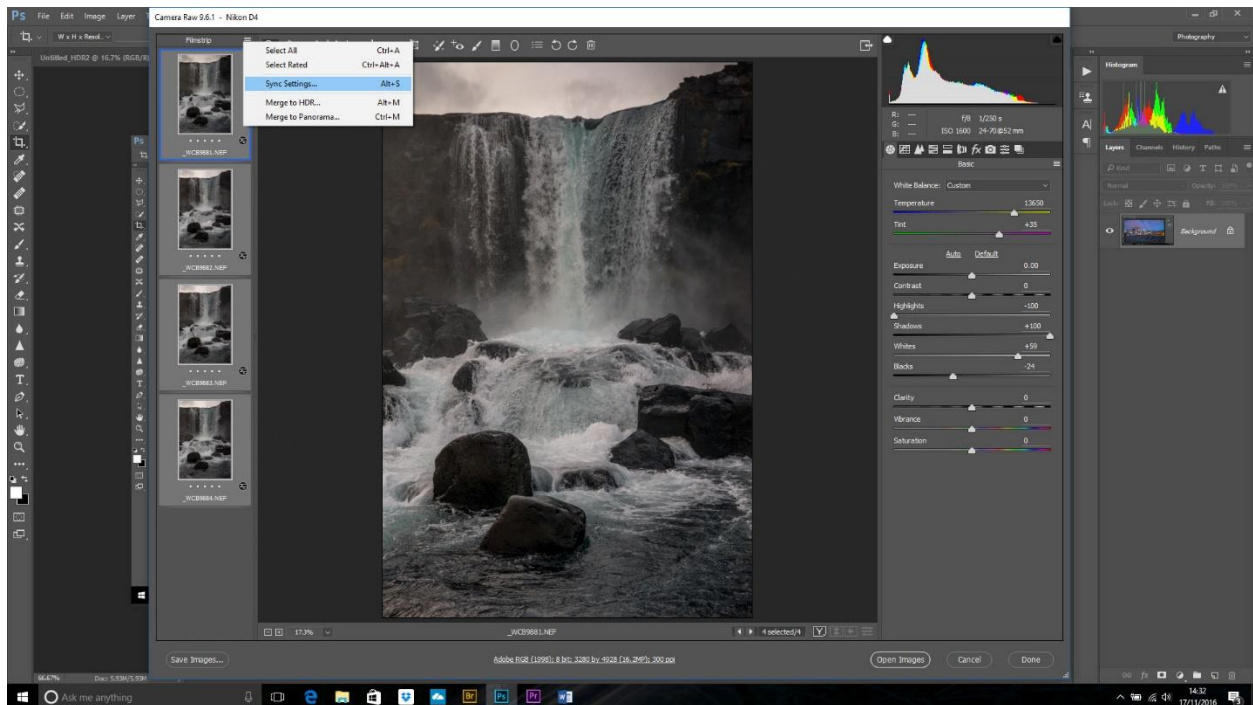


One Mean Waterfall

I had remembered seeing a YouTube tutorial where it was possible to mimic a long exposure shot by using a series of normal, hand-held, no tripod shots and Photoshop jiggery-pokery! So, faced with a few waterfalls recently I shot some pictures hand held, 1/250s at f/8 and had a play! You can also use this for landscape shots to give the 'streaking sky' you see when using a 10-stop filter.

First of all, I selected the 4 images in Bridge and opened them in Adobe Camera RAW as they were RAW files (of course!). I tweaked the sliders of the first one and then Cntl+A to select all and applied the settings to the other pictures using the little dropdown I chose Sync Settings (Alt+S) then clicked done.



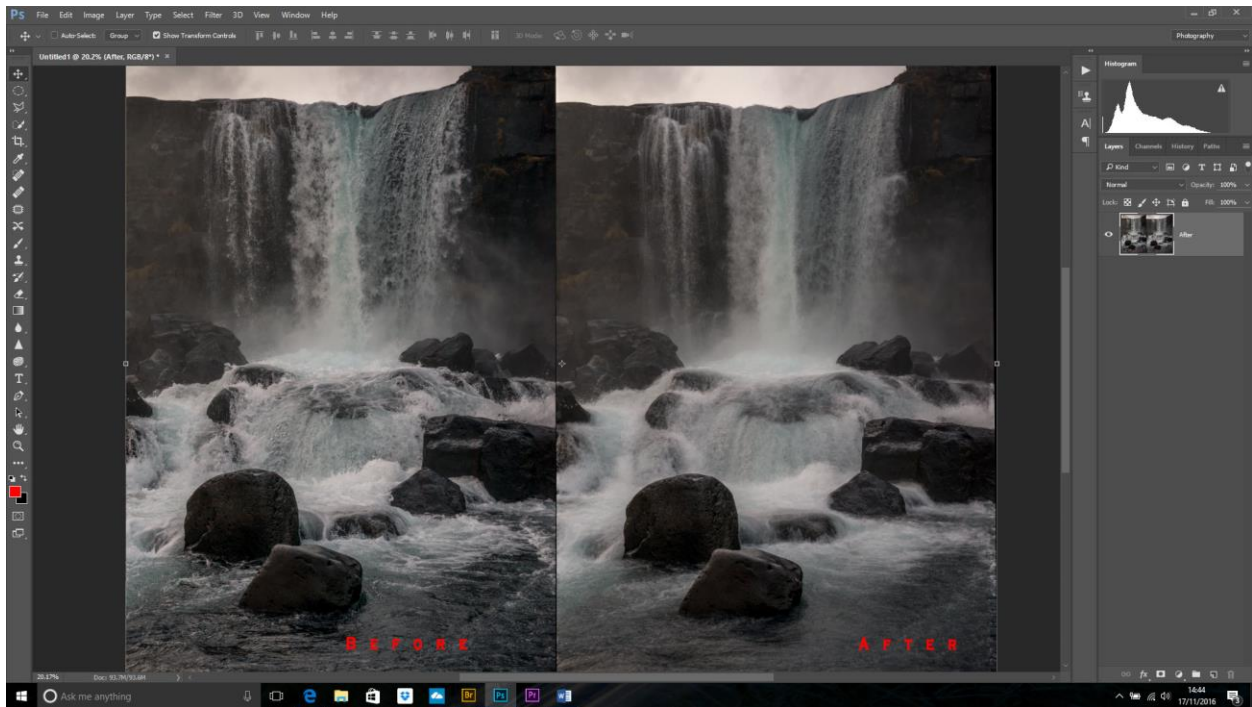
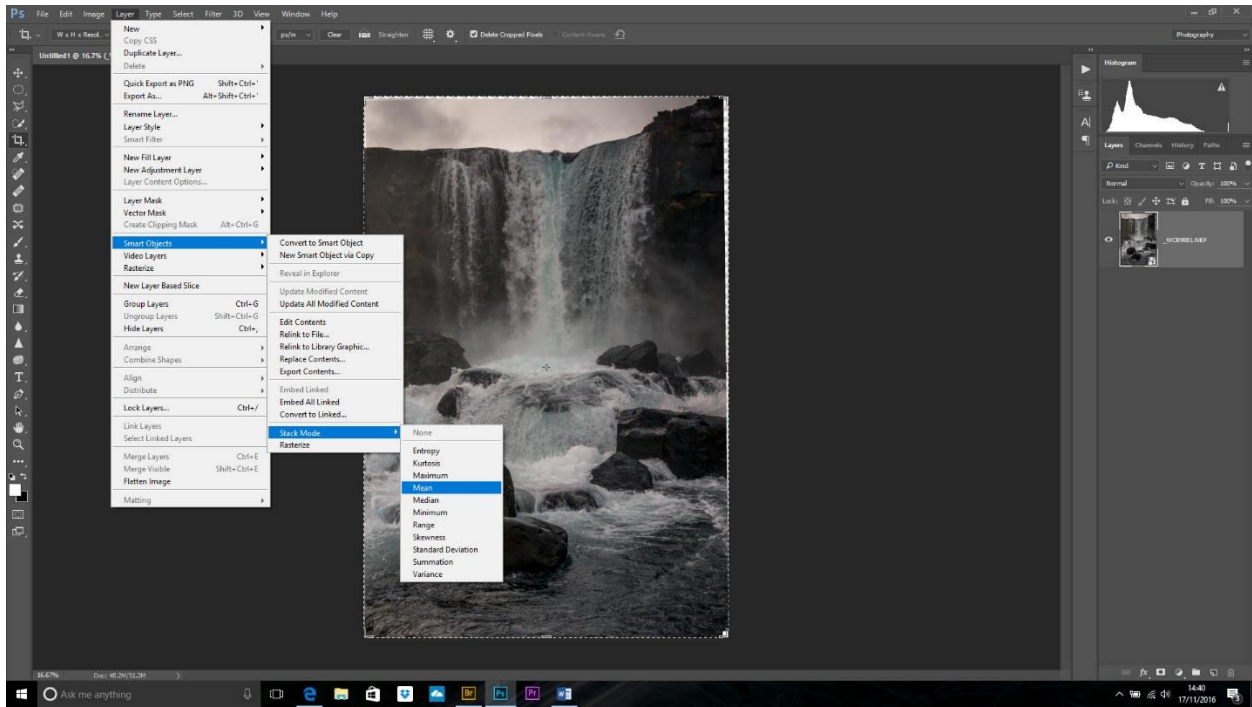
Back in Bridge the pics were still selected so Tools>Photoshop>Load Files into Photoshop Layers

The 4 images load into Photoshop, but remember these were hand held so we need to make sure they are aligned. Select all the layer (Shift+click on them).

Edit>Auto Align layers and select the Auto option.

Layer>Smart Object>Convert to Smart Object. The layers will collapse into one.

Layer>Smart Object>Stack Mode>Mean



I would probably finish off this image with some dodging and burning and selective sharpening.

Remember, the more images you use the better the effect will look.

Done!