

Break for the Borders

Simple resize for printing.

As most of you know, I don't do my own home printing. Been there, done it and found it both expensive and problematic. I didn't print that often so the heads blocked up and I only had an A4 printer so I was limited to that size. I decided to abandon home printing and use an online printing company instead and I have never looked back. After 10 years, I am still using the same company.

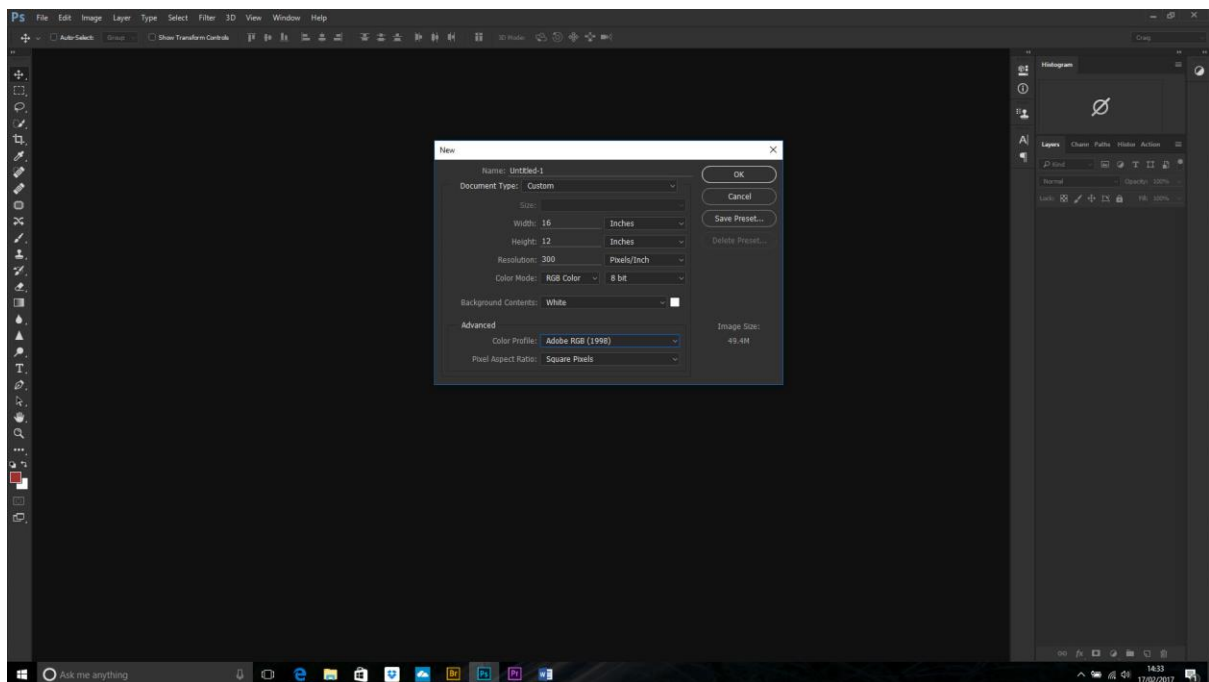
There are a few things which make printing online easier.

1. Calibrate your monitor
2. Download the Colour Profile from the print company.
3. Resize carefully and
4. Assign this profile to your images

Simple Sizing

For this demo I am going to get a print ready to be printed at 16x12in. I will leave a gap around it for a card mount.

File>New and choose Custom size. Make sure the units are in inches and the resolution is 300ppi and the background White. Don't worry about the colour profile setting for the moment.



NB. If you use this size often then you can save it as a preset using the Save Preset option.

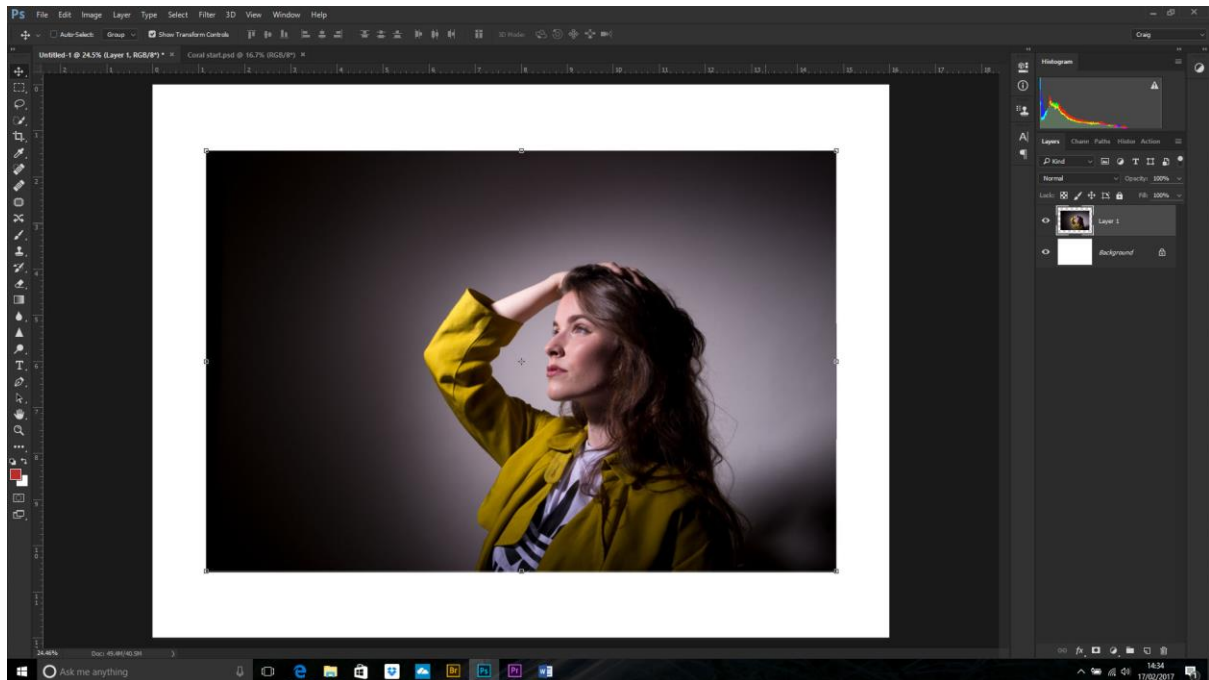
Open your image and, when you are happy with the finished image, save it with the layers (PSD file).

I always find the next bit easier with a single layer, so flatten your image.

Select the move tool, click and drag to the Untitled-1 tab and when you get there the white page will appear. Hold down the Shift key and drag the arrow onto the white page (you should see a + sign

beside your cursor) and this will drop it into the middle. I then resize by holding down the Shift+Alt keys and dragging the corner handles inward/outward as required.

Leave an inch or two around the image for the mount.



Stroke of Luck

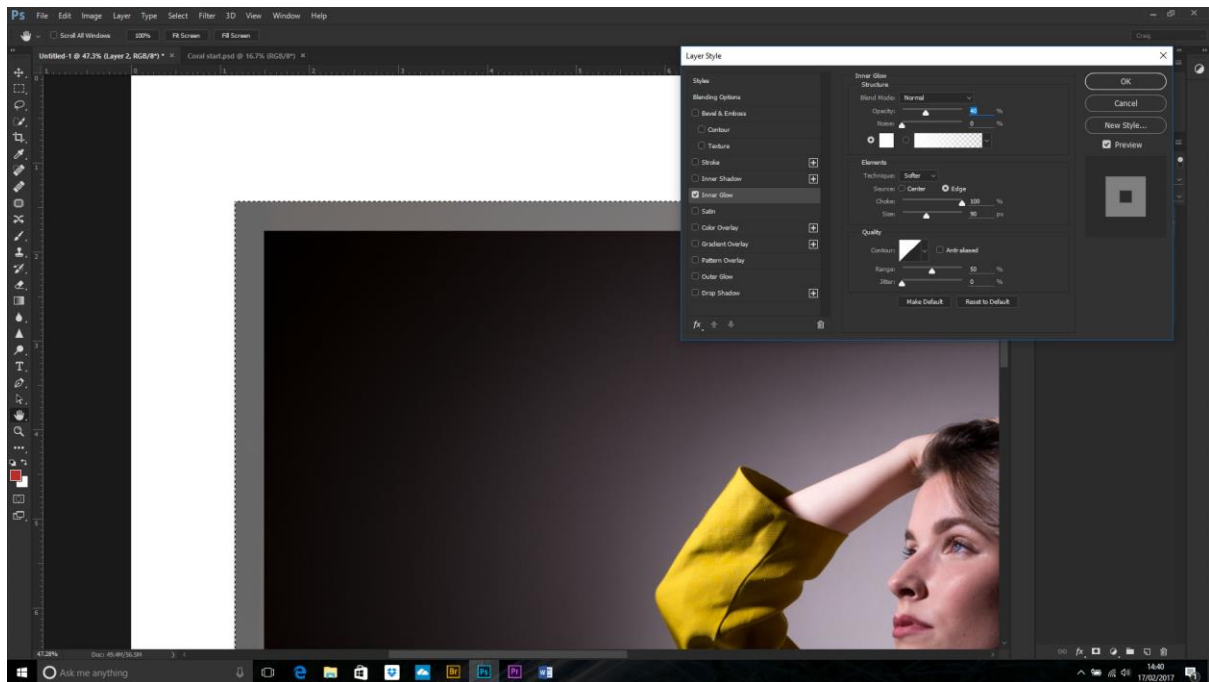
If you want to get a bit fancy, then you can add a stroke either inside or outside the image.

For this mainly dark image, an inner stroke looks modern and works well.

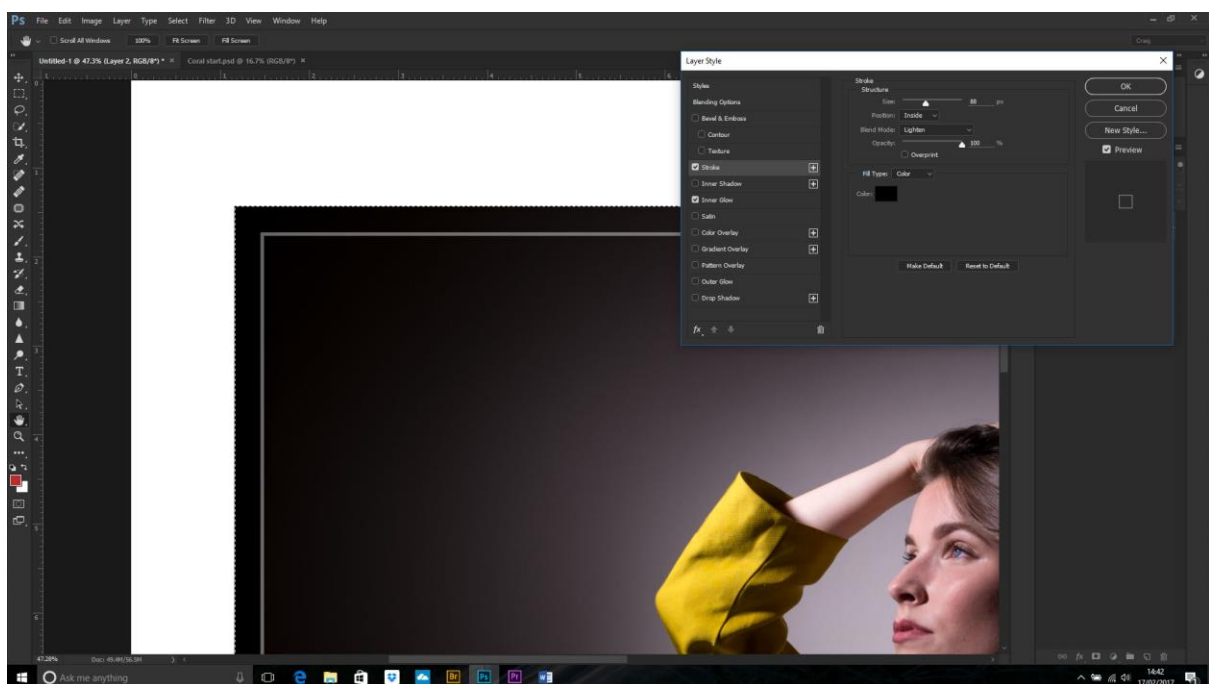
Cntl+click on the picture layer and make a copy of this (Cntl+J). We want to fill this with white but only the image, so Cntl+click on this new layer too. To fill with white either Edit>Fill and choose white or Cntl+backspace if you have default colours chosen. Your image will disappear – but don't panic.

Drop the Fill (not the opacity!) to 0 and you should see the image once more.

Double click on the layer. Choose Inner Glow. Change the Blend mode to Normal and the opacity around 40% (higher opacity will make it whiter). Move the Choke to 100 and move the Size slider to the desired amount. Remember this size for the next bit! Here I chose 90px.



Choose Stroke and make the size about 2px less than the inner glow size. Choose Inside for the position and Lighten for the blending mode.



I then flatten the image.

Next thing is to change the Colour Profile so the colours print true. Edit>Convert to Profile (not Assign Profile!) and choose the right profile for your print/paper combination.

Save the image as a high quality JPEG (I usually choose 10, not 12 to make the upload easier) and send it to the printers.

Done!