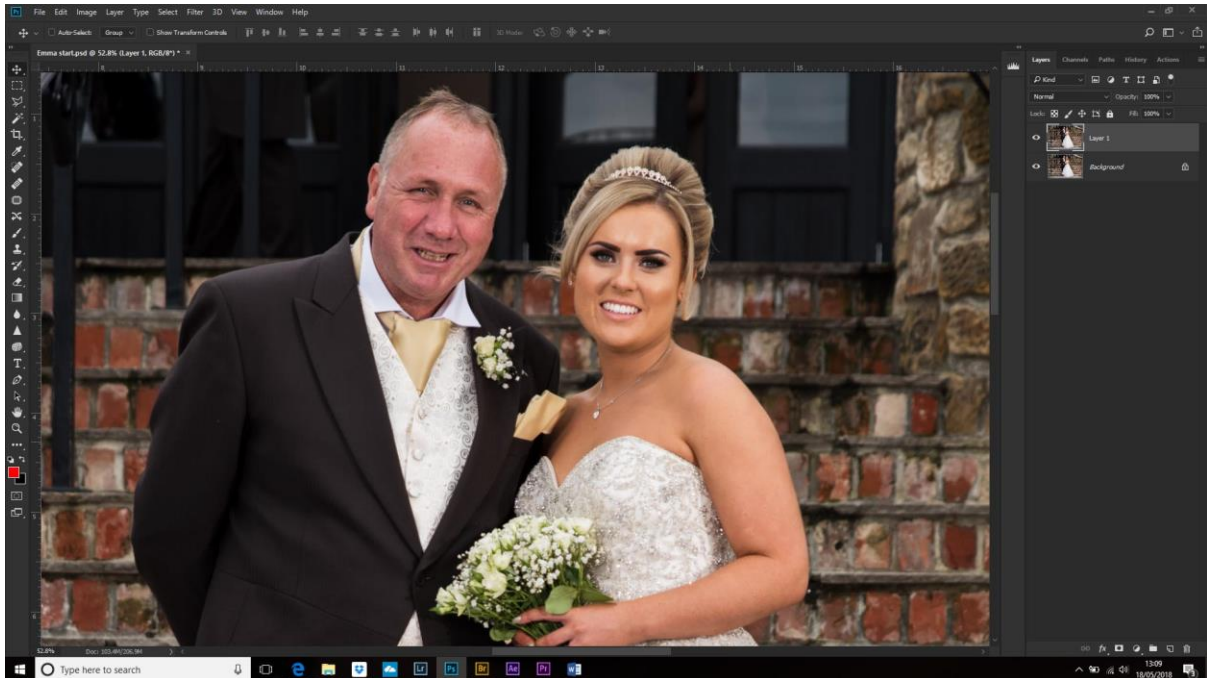


Correcting Skin Colours

When two people stand side-by-side in a photograph, it is very noticeable if their skin tones differ. Like most things 'Photoshopy', there are a number of ways to correct this, including making a selection of the skin using Select>Colour Range and using Colour Balance or similar to change the colour. You may have to add a mask depending on how good a selection you made.

This is my preferred method of colour correction.

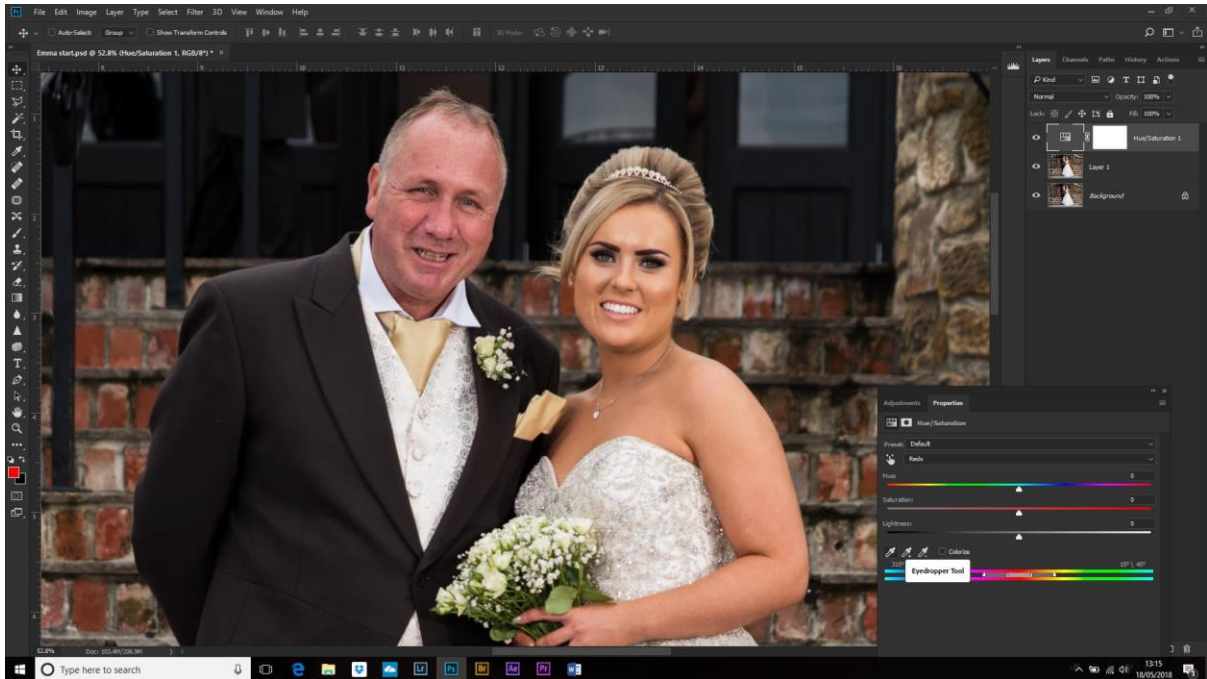
Open your image in Photoshop and make a copy of the background layer (Cntl+J).



Make a Hue/Saturation adjustment layer (bottom of the layers palette>click half black circle and choose Hue/Saturation).

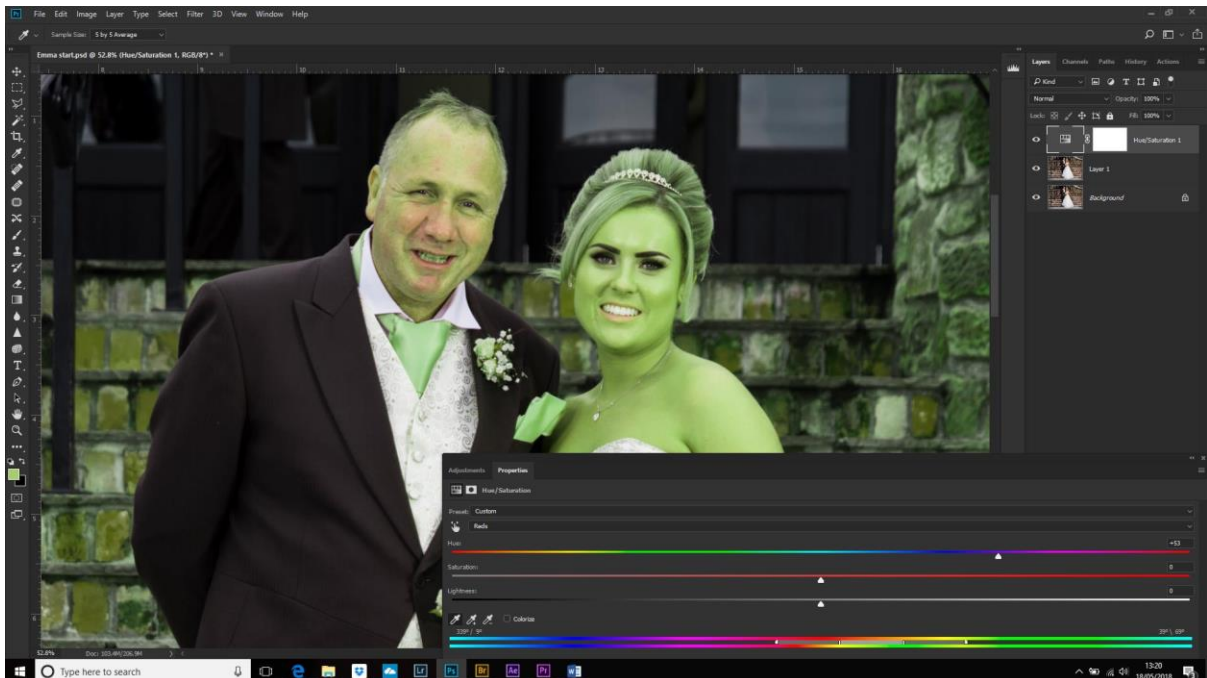
Now, we want to target only the bride's skin colour, but we can't use the eyedropper tool until we change the setting from 'Master'. Click on Master and choose Reds from the dropdown.

Choose the eyedropper tool and click on the skin we want to fix.



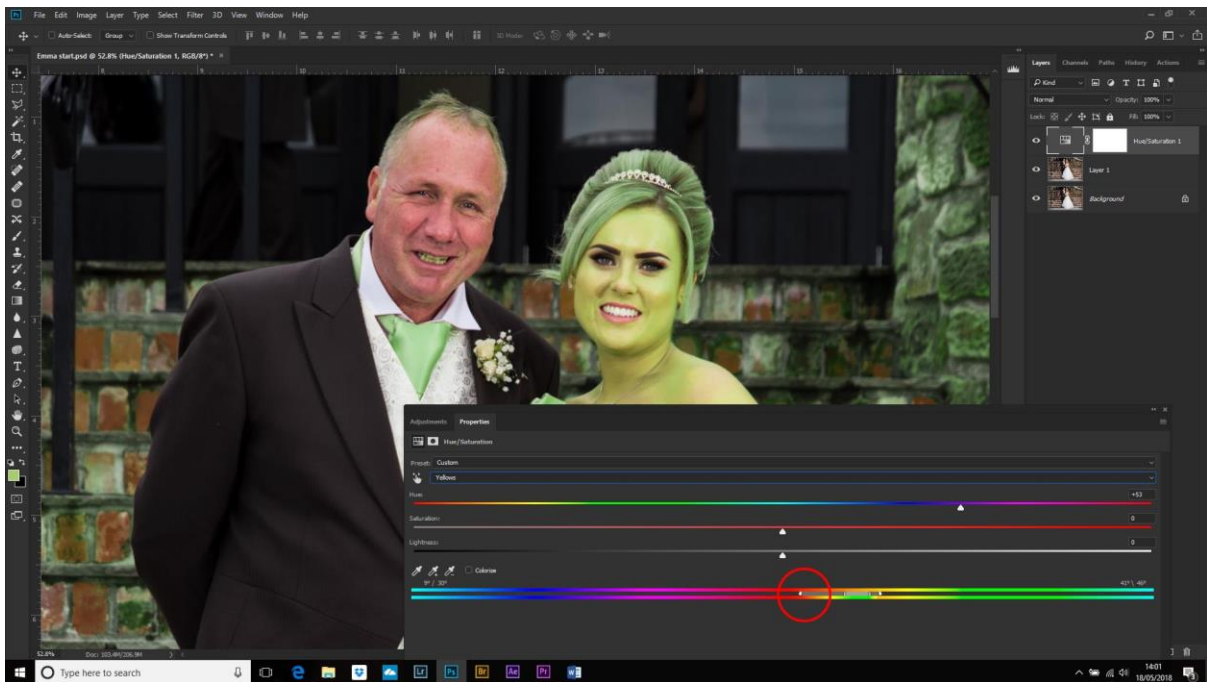
It looks like nothing has happened! Don't panic – we have to move the sliders to see what's going on and we can make the box bigger so we can make finer adjustments. Grab the left-hand edge of the box and drag it wider.

Move the Hue slider until the colour changes to something more noticeable – here I chose Shrek-Green!

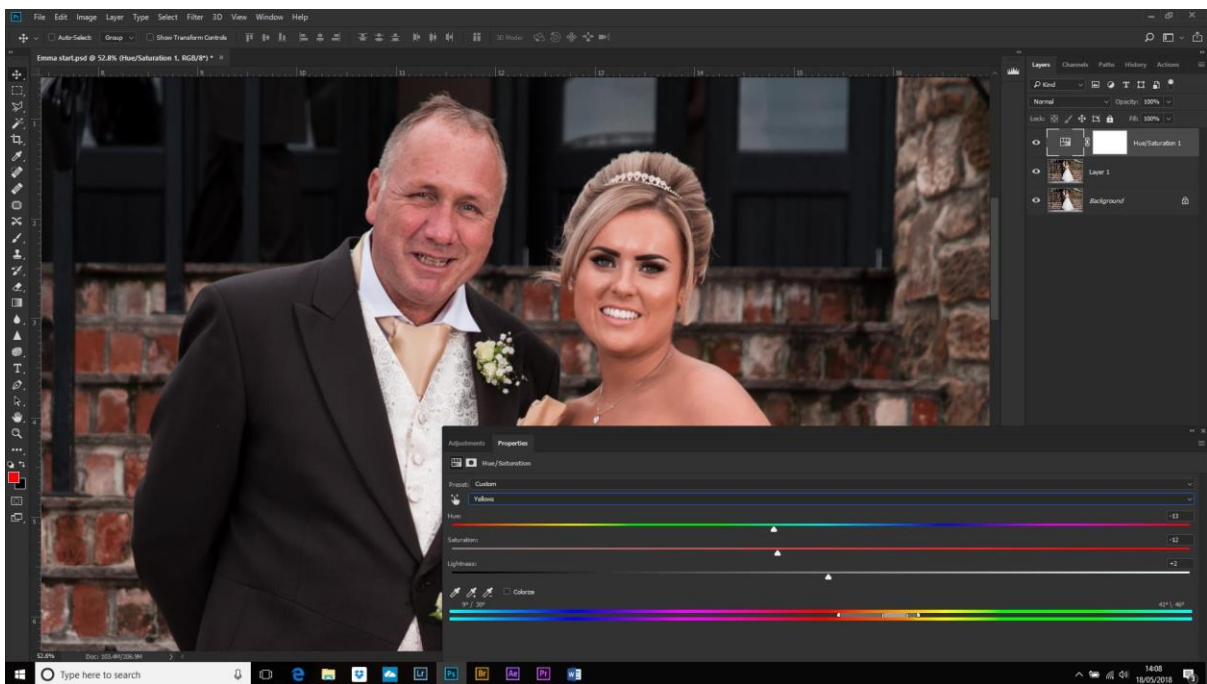


Now you can see that more than the bride's skin was selected. We can fine-tune by using the sliders at the bottom of the Hue/Sat adjustment layer box.

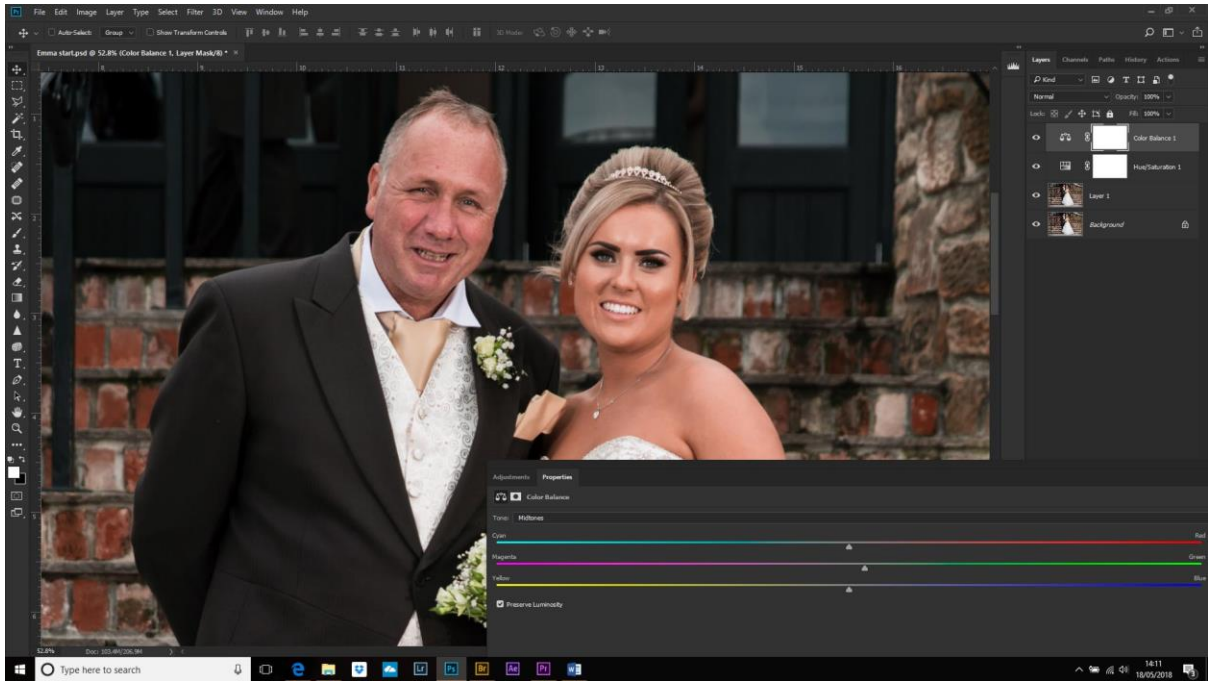
The top band is the selected colour range which will be effected and the bottom is the output. Move the handles inward and side the range left to right to get the best selection.



Of course, you wouldn't get any thanks for leaving the bride looking like a princess – even if it is Princess Fiona! Move the Hue slider towards the reds and adjust the Saturation and the Lightness to suit.



Finishing Touches – now the skin tones are similar I felt that there was still a little too much magenta, so I corrected this using a Colour Balance adjustment layer and dragging the mid-tones magenta slider slightly towards the greens.



Done!